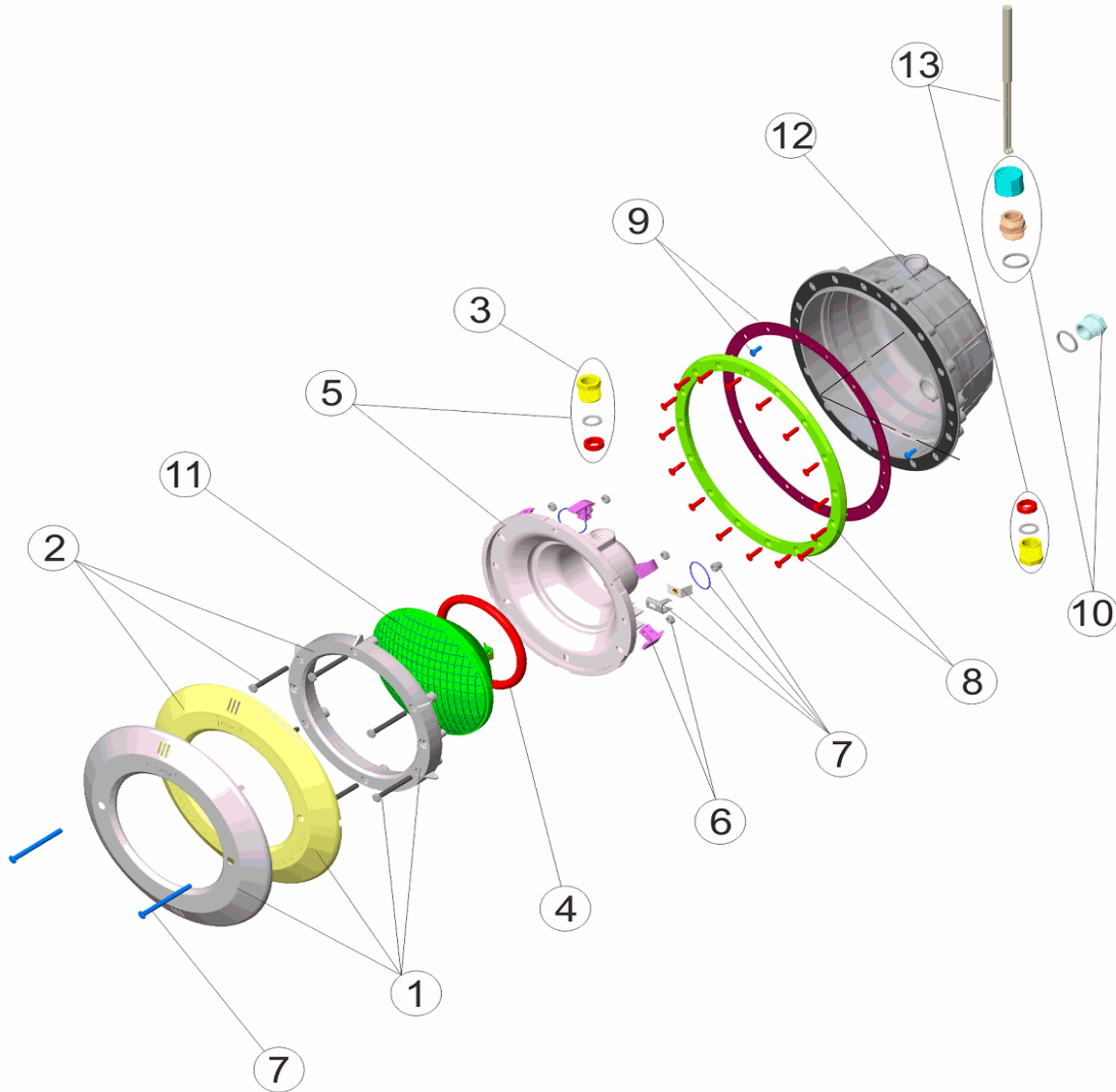


CODE **07855, 07856, 21080**

DESCRIPTION: **PP. POOL LIGHT COVER STAINLESS STEEL, WHITE AND PARKER CABLE**



ENGLISH

| POS | CODE | DESCRIPTION | POS | CODE | DESCRIPTION |
|-----|--------------|---|-----|--------------|-----------------------------------|
| 1 | * 4403010301 | S.S. FACEPLATE AND SECURING RING | 8 | * 4403012416 | LIGHT RIM PARKER |
| 2 | * 4403010302 | WHITE FACEPLATE | 9 | 4403012412 | LIGHT ADHESIVE GASKET |
| 3 | 4403010312 | PACKING GLAND M-25 | 10 | 4403010313 | BODY PACKING GLAND M-25 |
| 4 | 4403010304 | LIGHT O RING | 11 | 4403010058 | LIGHTBULB |
| 5 | 4403010305 | BACK COVER | 12 | * 07856R0200 | BIMATERIAL METRIC PITCH HOUSING |
| 6 | 4403010306 | LIGHT FIXING CLIP | 12 | * 21079R0002 | BIMATERIAL SELF-THREADING HOUSING |
| 7 | 4403015002 | FIXING SET UNDERWATER LIGHT JELLY STD. A2 | 13 | 4403010314 | LIGHT CABLE M-25 |
| 8 | * 4403012411 | LIGHT RIM | | | |

CODE **07855, 07856, 21080**

DESCRIPTION: **PP. POOL LIGHT COVER STAINLESS STEEL, WHITE AND PARKER CABLE**

OBSERVATIONS

| POSICIÓN | PIEZA | OBSERVACIÓN |
|----------|------------|-------------------|
| 1 | 4403010301 | PARA 07851 |
| 2 | 4403010302 | PARA 07852, 21080 |
| 8 | 4403012411 | PARA 07855, 07856 |
| 8 | 4403012416 | PARA 21080 |
| 12 | 07856R0200 | PARA 07855, 07856 |
| 12 | 21079R0002 | PARA 21080 |